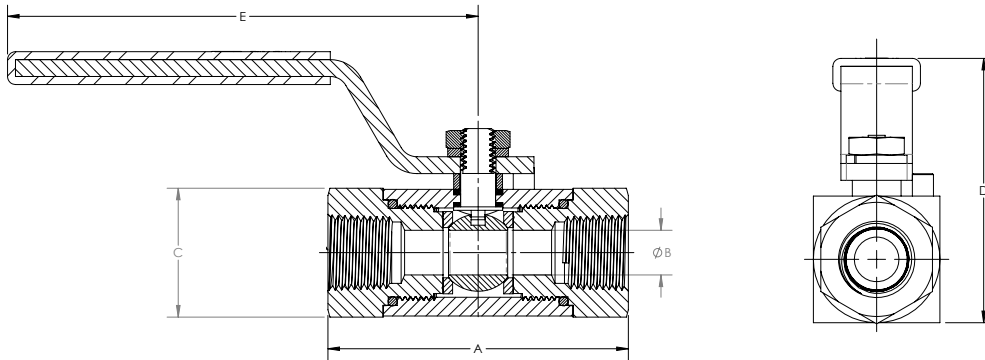
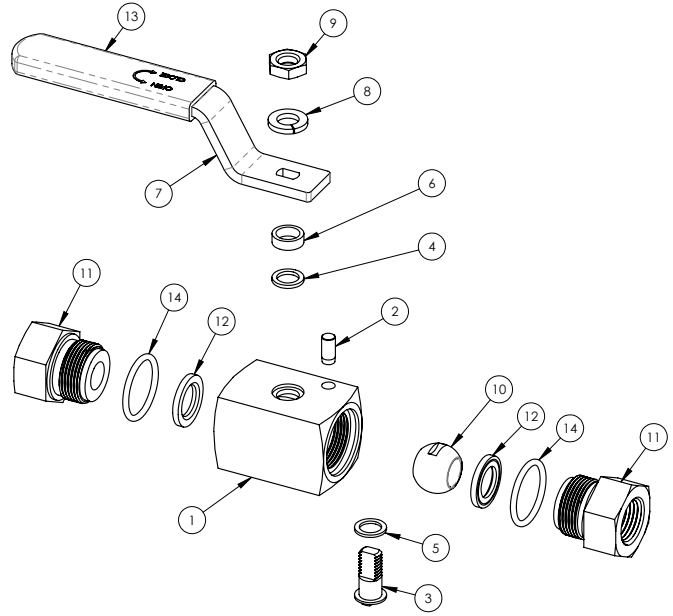




Features

- 3 Piece Design and Square Body
- Robust body that is best suited for High Pressure application
- Floating Ball Design ensures leak proof shut off at high pressures
- Seats and Packings are replaceable
- Maximum Orifice minimizes pressure drops
- Stem is internally loaded and anti blow-out design
- 100% factory tested
- Up to 10,000 psig (689 bar) at 70°F (21°C)

No.	Description	Material
1	Body	ASTM A479 Gr. SS 316
2	Stop Pin	SS304
3	Stem	ASTM A479 Gr. SS 316
4	Packing (top)	ASTM A479 Gr. SS 316
5	Stem Bearing Bottom	CFT
6	Stem Packing Gland	Graphite
7	Handle	SS304
8	Handle Lock Washer	SS304
9	Handle Nut	SS304
10	Ball	ASTM A479 Gr. SS 316
11	End Screw	ASTM A479 Gr. SS 316
12	Seat	Peek
13	Handle Sleeve	PVC
14	O-Ring	Viton AED



Part Number	Connection	A	B	C	D	E
SS-10KBV-F4F4	1/4" FNPT	2.91	.39	1.26	2.83	4.13
SS-10KBV-F6F6	3/8" FNPT	2.91	.39	1.26	2.83	4.13
SS-10KBV-F8F8	1/2" FNPT	3.39	.50	1.26	2.83	5.12
SS-10KBV-F12F12	3/4" FNPT	3.74	.75	1.97	3.62	6.50
SS-10KBV-F16F16	1" FNPT	4.33	.98	2.48	4.13	6.50